

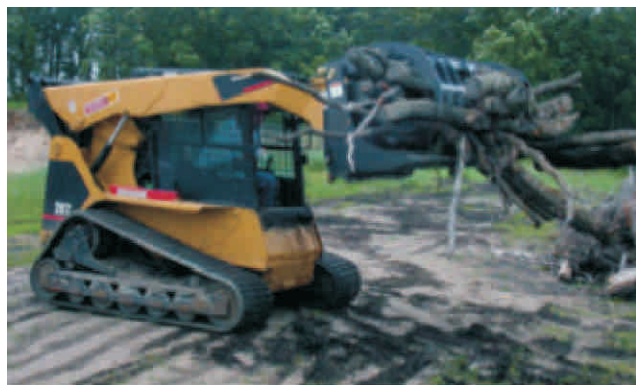


# HEAVY DUTY BRUSH AND ROCK GRAPPLE



## FEATURES:

- Built for skid steers and loaders with universal mount
- Extreme duty 1/2" T-1 steel top teeth and 3/4" t-1 steel bottom teeth handle the biggest loads
- Massive 46" grapple opening
- Optimal spacing of teeth allows debris to fall through
- Replaceable digging teeth
- Serrated lower teeth grip loads tightly
- Gusseted between teeth for greater strength and stability
- Curved teeth glide over ground - rakes and cleans while minimizing turf damage
- Excellent for demolition, stump removal, removal of concrete, rocks, debris, and root removal
- Heavy duty construction
- Durable charcoal paint finish



Unique serrated edges provide grip to keep items from rolling out.



Gusseted between teeth for added strength.



All products are subject to change without notice or liability.

**Toll Free: 1-877-947-2882**  
**www.conterraindustries.com**

Box 59, Rockyford, Alberta Canada T0J 2R0  
Ph: (403) 947-2882 Fax: (403) 947-2892

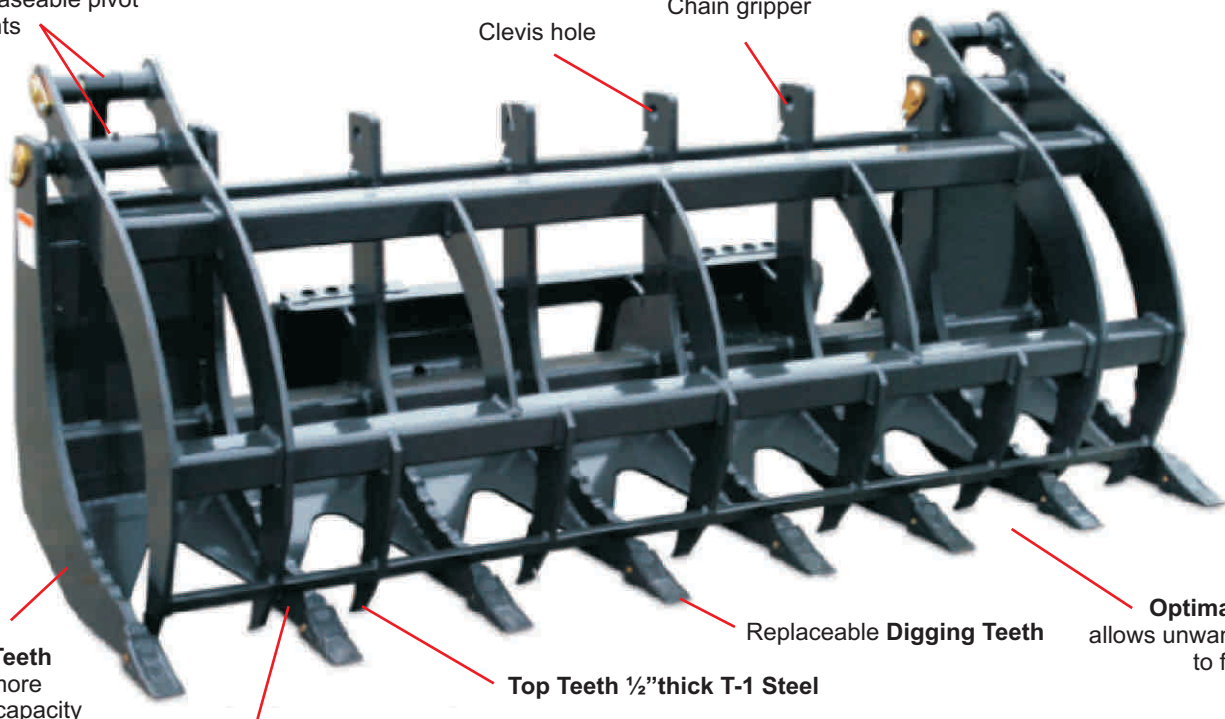
# D10



Greaseable pivot points

Clevis hole

Chain gripper



Longer Teeth provide more carrying capacity

Top Teeth 1/2" thick T-1 Steel

Replaceable Digging Teeth

Optimal Spacing allows unwanted debris to fall through

Bottom Teeth 3/4" thick T-1 steel



**SPECIFICATIONS:**

Model #	Width	# of Lower Teeth	# of Upper Teeth	Lower Teeth Spacing	Height Grapple Closed	Height Grapple Open	Weight
HDBRG 72	74.13"	7	8	10.53" average	37.42"	53.58"	1050 lbs
HDBRG 84	86.13"	8	9	10.53" average	37.42"	53.58"	1200 lbs

\* The above numbers reflect the weight of the implement. Please refer to your owners manual of your skid steer or loader for lift capacities.



All products are subject to change without notice or liability.

**Toll Free: 1-877-947-2882**  
**www.conterraindustries.com**

Box 59, Rockyford, Alberta Canada T0J 2R0  
 Ph: (403) 947-2882 Fax: (403) 947-2892

**D11**

PRINTED IN CANADA