



CON TERRA ARENA GROOMER

Finally, an affordable solution for effective and efficient arena and track grooming and maintenance!



- The *CON TERRA ARENA GROOMER* is designed for use with tractors with a three point hitch system.
- The revolutionary **Depth Control System** cultivates the entire arena to a pre-set and consistent depth **every time!**
- Arena depth can be adjusted from 2" to 5" deep.
- The Grading Blade constantly floats and levels the arena as you groom. The Grading Blade can be set in a float position or a locked position to maximize cutting force
- The Grading Blade uses a 5/8" x 6" beveled grader blade.
- The Danish Style S-Tines are made from high-quality, German forged steel for long-lasting life
- The Danish Style S-Tines are fitted with 7" wide Cultivator Sweeps. The sweeps are positioned to overlap each other, leaving an excellent sub-surface.
- The Arena Comb blade easily adjusted using an adjustable is adjustable ratchet jack.
- The Arena Comb floats, levels and packs the arena top dressing leaving an excellent finish.
- The Arena Comb is laser cut, using 3/4" hardened steel.
- The *CON TERRA ARENA GROOMER* can accomodate either a Cat 1 or Cat 2 three point hitch.
- Available in 5', 6' and 7' models for tractors from 18 to 70 horsepower.
- Heavy duty construction.
- Durable Black Paint finish.

NOTE: Other Model available for Skid Steers, Quads and Garden Tractors

SPECIFICATIONS:

Model #	Comb Width	Comb Length	Horse Power Required	Weight
CAG 60	60"	56.25"	18 to 25 HP	1012 lbs.
CAG 72	72"	56.25"	25 to 40 HP	1130 lbs.
CAG 84	84"	56.25"	35 to 60 HP	1230 lbs.

* The above numbers reflect the weight of the implement. Please refer to your owners manual of your skid steer or loader for lift capacities.

GRIDLOCK

Manufacturing Technique

This product features our Grid Lock manufacturing technique that allows for increased strength with less overall weight.



All products are subject to change without notice or liability.

Toll Free: 1-877-947-2882
www.conterraindustries.com

Box 59, Rockyford, Alberta Canada T0J 2R0
Ph: (403) 947-2882 Fax: (403) 947-2892

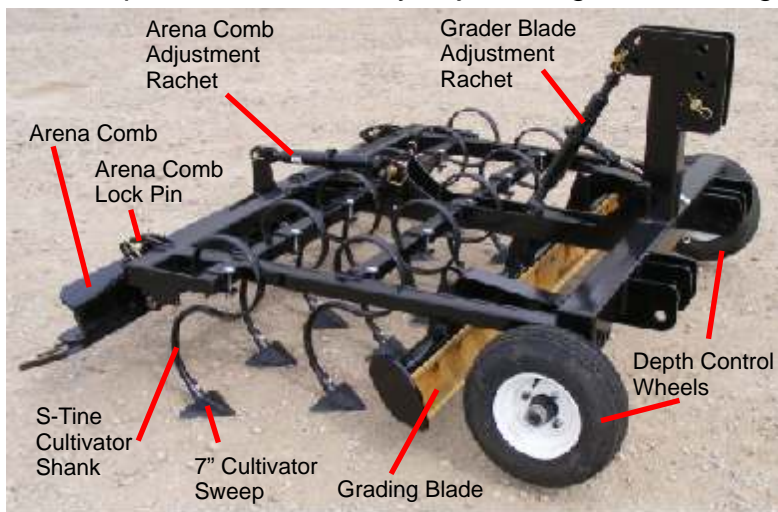
G4

PRINTED IN CANADA



The *Conterra Arena Groomer* is designed to make arena maintenance as simple and consistent as possible. Most groomers on the market rely on the operator to constantly adjust the groomer using the tractor's three point hitch control.

Inevitably, this leads to inconsistency in arena preparation; especially in the depth of the arena. If you have multiple operators, this situation is further complicated. The Conterra Arena Groomer virtually eliminates these problems through our easy-to-use groomer adjustment settings. The Danish Style S-Tines can be pre-set by adjusting the wheel height positions from 2 to 5 inches of depth. Both the front Grading Blade and the rear Arena Comb can be adjusted by simply using ratchet jacks. These features allow any operator, young or old, male or female to quickly and consistently groom!



Easy Adjustment Means Faster, Consistent Results!

1) The **Depth Control Wheels** allows the operator to maintain constant depth at all times. Other groomers are complex, forcing the operator to adjust each tooth individually. The Conterra Arena Groomer allows you to simply set the depth of choice, in one of the four adjustment holes and get grooming. It's that easy!



Locate Depth Wheel Adjustment retainer Pin



Remove Depth Wheel Adjustment retainer Pin



Remove Depth Wheel



Select new wheel depth and re affix wheel at new depth

2) The **Grading Blade** constantly floats and levels the arena as you groom. The Grading Blade can be set in a float position or locked into position to maximize cutting force. Grading Blade height is easily adjusted by a simple manipulation of a ratchet jack.

3) The **Arena Comb** floats, levels, and packs leaving an excellent top dressing finish. Like the Grading Blade, it is adjusted by simply manipulating a ratchet jack up or down the the desired position and pinning it into position.



All products are subject to change without notice or liability.

Toll Free: 1-877-947-2882
www.conterraindustries.com

Box 59, Rockyford, Alberta Canada T0J 2R0
 Ph: (403) 947-2882 Fax: (403) 947-2892

G5

PRINTED IN CANADA



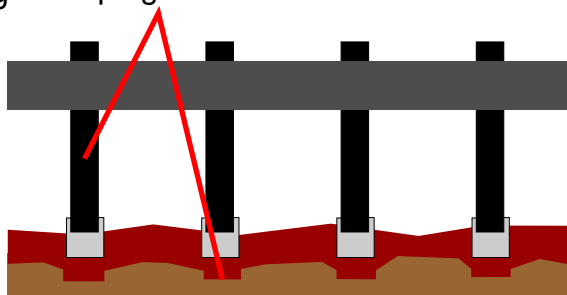
WHAT IS YOUR HORSE RUNNING ON?

Most people look at the finished surface (Top Dressing) of their arena and if it looks level they think the arena is great, "Lets Ride". Hold it! The real key to your horses hoof and lower leg health lies where you can't see! It lies in the sub-surface of your arena. Some arena groomer only address the top dressing of an arena and do nothing to prepare the sub-surface, others actually make it worse.



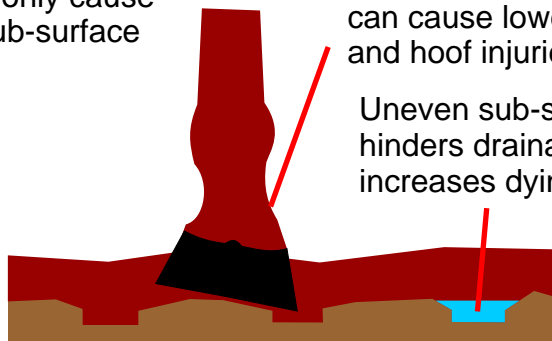
Warning

Arenas prepared with a double disc, scarifier shanks or cultivator shanks with narrow shovels not only cause clumping but also can leave an uneven sub-surface

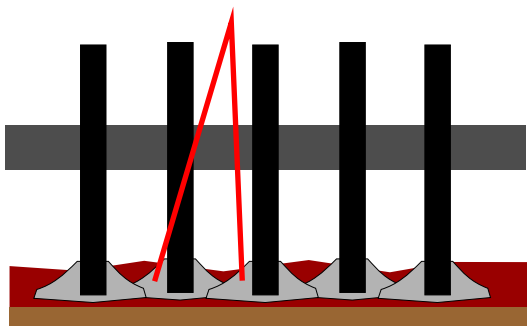


An uneven sub-surface can cause lower joint and hoof injuries

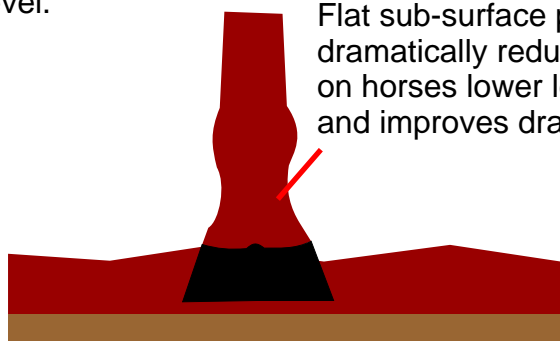
Uneven sub-surface also hinders drainage and increases drying time



The *CON TERRA GROOMER* uses Cultivator Sweeps that over lap each other as they cut, which in turn leaves the sub-surface very level.



Flat sub-surface preparation dramatically reduces the stress on horses lower legs and hoofs and improves drainage



CON TERRA has been building attachments for tractor and skid steers for 13 years. All *CON TERRA* products are backed by an industry-leading 30 day satisfaction guarantee. If you are not happy with your attachment we will buy it back or exchange it for the attachment that better suits your needs. All *CON TERRA* built products are also covered by our 100 percent manufacturer's defect warranty.



All products are subject to change without notice or liability.

Toll Free: 1-877-947-2882
www.conterraindustries.com

Box 59, Rockyford, Alberta Canada T0J 2R0
Ph: (403) 947-2882 Fax: (403) 947-2892

G5

PRINTED IN CANADA